

FRANK FAMILY
VINEYARDS

Lewis Vineyard



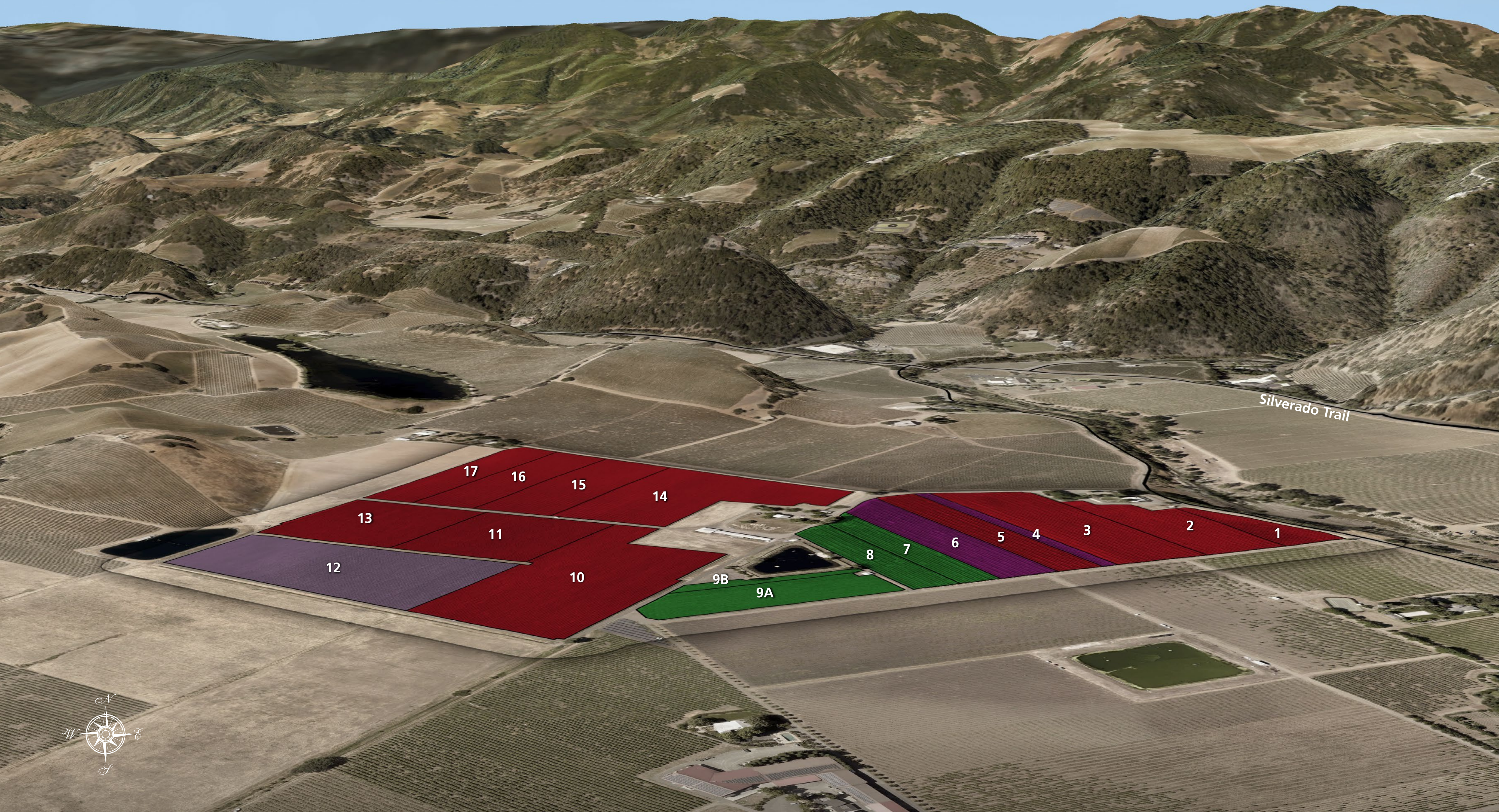
Block	Variety	Clone	Acres	Spacing	Planted	Block	Variety	Clone	Acres	Spacing	Planted	Block	Variety	Clone	Acres	Spacing	Planted
A1	Chardonnay	124	4.96	7' x 5'	2007	F1	Pinot Noir	115	1.23	7' x 5'	2007	J3	Chardonnay	Hyde Wente	5.18	9' x 3.5'	2006
A2	Chardonnay	548	4.99	7' x 5'	2007	F2	Merlot	181	9.55	7' x 5'	2004	J4	Chardonnay	Hyde Wente	1.76	9' x 3.5'	2006
B1	Chardonnay	15	4.49	7' x 4'	2005	G	Chardonnay	5	7.96	9' x 6'	1989	K	Chardonnay	5	6.85	9' x 6'	1989
B2	Chardonnay	809	5.28	7' x 4'	2005	H1	Chardonnay	96	3.98	7' x 4'	2005	L	Chardonnay	95 / 96	17.82	9' x 3'	1995
C	Pinot Noir	667	3.77	7' x 5'	2007	H2	Chardonnay	96	4.11	7' x 4'	2005	M1	Chardonnay	96 / 76	11.01	6' x 4'	1996
D	Chardonnay	5	7.88	9' x 6'	1989	I	Chardonnay	5	8.55	9' x 6'	1989	M2	Chardonnay	96 / 76	11.3	6' x 4'	1996
E1	Pinot Noir	777	2.45	7' x 5'	2004	J1	Chardonnay	17	5.54	7' x 4'	2005	N1	Chardonnay	76 / 95 / 96	1.46	6' x 3.5'	2000
E2	Pinot Noir	115	2.44	7' x 5'	2004	J2	Chardonnay	17	1.85	7' x 4'	2005	N2	Chardonnay	76	0.74	6' x 3.5'	2000

LEGEND

■	Chardonnay	115.15 ac
■	Merlot	9.55 ac
■	Pinot Noir	9.89 ac
Total Varietals		135.15 ac

FRANK FAMILY
VINEYARDS

Benjamin Vineyard



Block	Variety	Clone	Acres	Spacing	Planted	Block	Variety	Clone	Acres	Spacing	Planted	Block	Variety	Clone	Acres	Spacing	Planted
1	Cabernet Sauvignon	337	1.3322	9' x 4'	2000	7	Open		2.21			12	Petit Verdot	400	8.242	7' x 7'	2015
2	Cabernet Sauvignon	337	3.3182	9' x 4'	2004	8	Open		1.66			13	Cabernet Sauvignon	4	4.585	7' x 7'	2015
3	Cabernet Sauvignon	15	4.3322	9' x 4'	2006	9A	Open		2.88			14	Cabernet Sauvignon	169	7.6364	7' x 4'	2016
4	Zinfandel	John K	1.3504	9' x 4'	2006	9B	Open		0.6			15	Cabernet Sauvignon	7	4.2818	7' x 5'	2016
5	Cabernet Sauvignon	337	3.7421	9' x 4'	1999	10	Cabernet Sauvignon	30	8.5559	7' x 7'	2015	16	Cabernet Sauvignon	Winston	3.8744	7' x 5'	2016
6	Zinfandel	Hayne	2.9198	9' x 4'	1999	11	Cabernet Sauvignon	47	4.603	7' x 7'	2015	17	Cabernet Sauvignon	4	3.3377	7' x 5'	2016

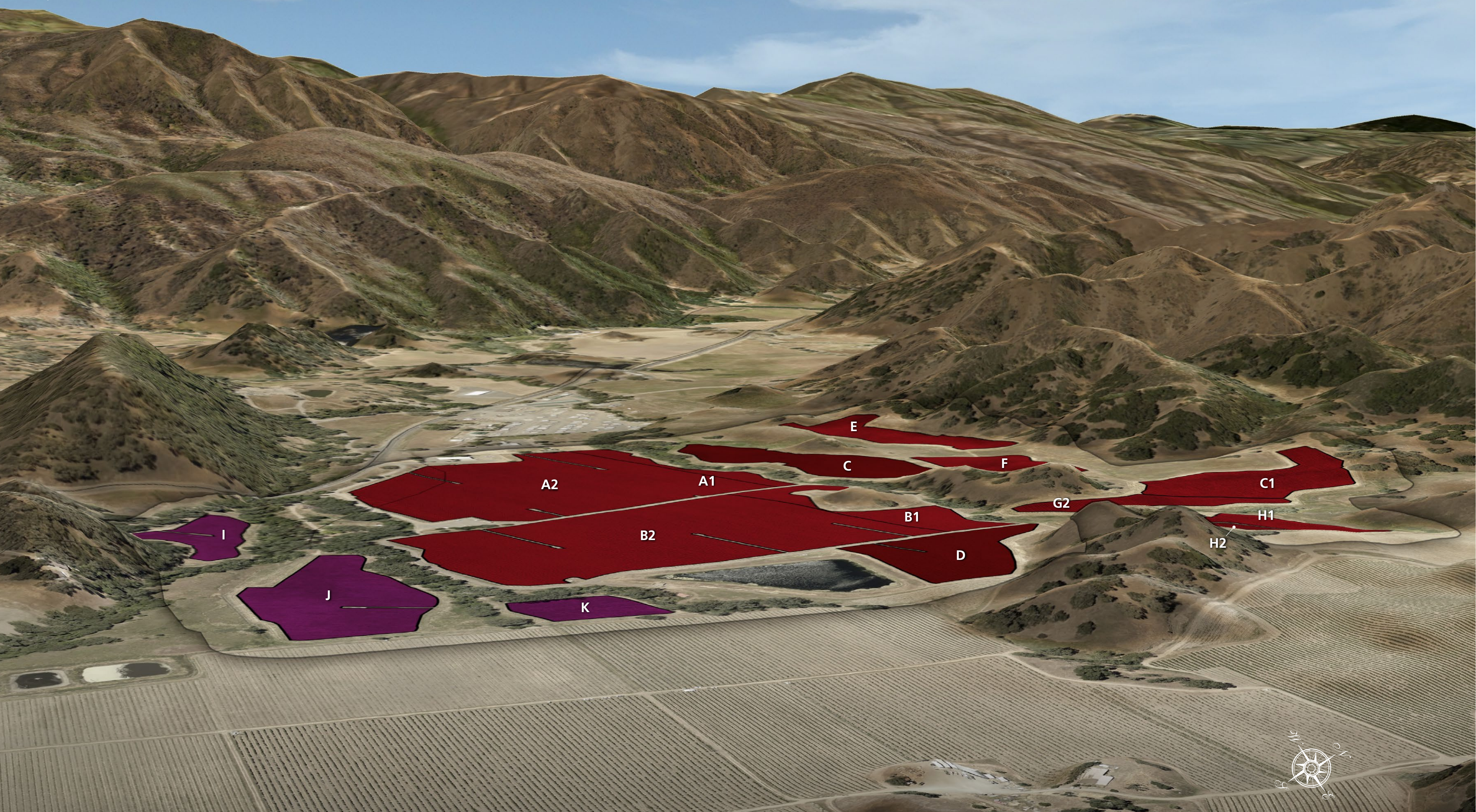
LEGEND

■	Cabernet Sauvignon	49.6 ac
■	Open	7.35 ac
■	Petit Verdot	8.24 ac
■	Zinfandel	4.27 ac
Total Varietals		69.46 ac

FRANK FAMILY
VINEYARDS

S & J Vineyard

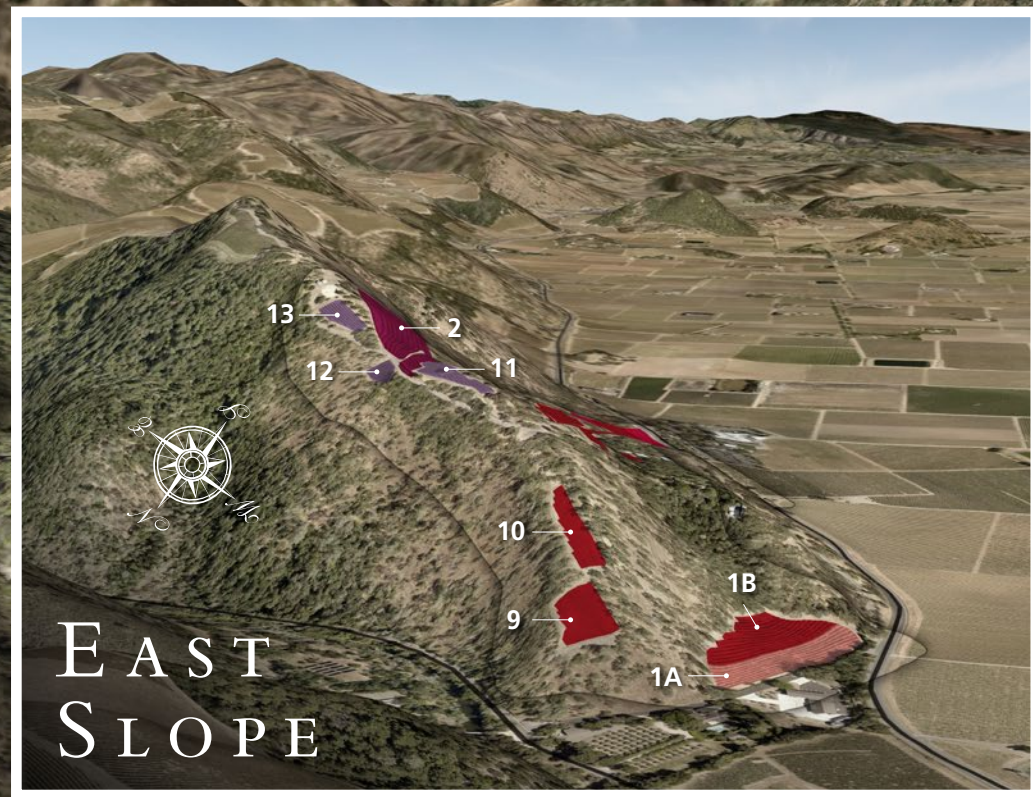
Atlas Peak



Block	Variety	Clone	Acres	Spacing	Planted	Block	Variety	Clone	Acres	Spacing	Planted	Block	Variety	Clone	Acres	Spacing	Planted
A1	Cabernet Sauvignon	337	1.77	7' x 5'	2000	D	Petite Sirah		3.78	7' x 5'	2005	H1	Cabernet Sauvignon	412	1.66	7' x 5'	2013
A2	Cabernet Sauvignon	4	20.08	7' x 5'	2000	E	Cabernet Sauvignon	169	3.16	7' x 5'	2013	H2	Cabernet Sauvignon	169	0.98	7' x 5'	2013
B1	Cabernet Sauvignon	15	3.05	7' x 5'	2000	F	Cabernet Sauvignon	685	2.67	7' x 5'	2013	I	Zinfandel	13	1.9	7' x 5'	2013
B2	Cabernet Sauvignon	337	18.9	7' x 5'	2000	G1	Cabernet Sauvignon	169	4.11	7' x 5'	2013	J	Zinfandel	13	5.39	7' x 5'	2013
C	Petite Sirah	3	5.04	7' x 5'	2000	G2	Cabernet Sauvignon	412	1.35	7' x 5'	2013	K	Zinfandel	13	1.26	7' x 5'	2013

LEGEND		
■	Cabernet Sauvignon	57.73 ac
■	Petit Syrah	8.82 ac
■	Zinfandel	?? ac
Total Varietals		75.10 ac

Winston Hill Vineyard



Lake Hennessey

Silverado Trail



Block	Variety	Clone	Acres	Spacing	Planted	Block	Variety	Clone	Acres	Spacing	Planted	Block	Variety	Clone	Acres	Spacing	Planted
1A	Merlot	SG	0.79	10' x 7'		6	Cabernet Sauvignon	Own	3.99	10' x 5'		10	Cabernet Sauvignon	6	0.42	7' x 3'	
1B	Cabernet Sauvignon	SG	1.67	10' x 7'		7A	Cabernet Sauvignon	SR	4.37	10' x 4'		11	Petit Verdot	400	0.3	7' x 3'	
2	Sangiovese	SG	3.17	10' x 5'		7B	Cabernet Franc	SR	0.67	10' x 4'		12	Petit Verdot	400	0.18	7' x 3'	
3	Cabernet Sauvignon	WH	0.96	7' x 4'		7C	Cabernet Franc		0.98	10' x 4'		13	Petit Verdot	400	0.25	7' x 3'	
4	Cabernet Sauvignon	SG	1.81	10' x 5'		8	Cabernet Sauvignon	SR	0.82	5' x 5'							
5	Cabernet Sauvignon	SR	4.22	10' x 5'		9	Cabernet Sauvignon	6	0.49	7' x 3'							

LEGEND

	Cabernet Franc	1.65 ac
	Cabernet Sauvignon	18.75 ac
	Merlot	0.79 ac
	Petit Verdot	4.17 ac
	Sangiovese	3.17 ac
Total Varietals		25.09 ac

Napa Valley Appellation



Pacific Ocean

Sonoma Creek

Sonoma

116

Los Carneros AVA

12

Buchli/Lewis Vineyards

Napa River

29

Napa Valley AVA

Napa

29

Yountville

Oakville

Rutherford

St. Helena

Calistoga

Benjamin Vineyard

Winston Hill Vineyard

Silverado Trail

S.J. Vineyard

12

San Pablo Bay



FRANK FAMILY
VINEYARDS

Rutherford Appellation



Continuum

Ovid

David Arthur

Bryant Family

Frank Family
Winston Hill
Vineyards

Silverado Trail

Beckstoffer

Heitz

Caymus

Quintessa

Usibelli

Frank Family
Benjamin
Vineyards

Napa River

Napa River

Napa River

Rutherford

St. Helena

Rutherford AVA

